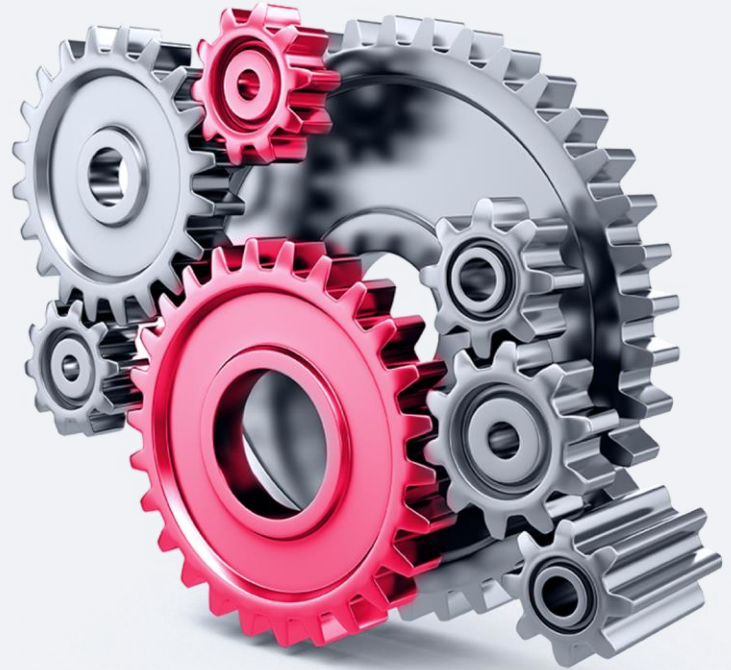




Company Profile

QA and Testing



Elinext Company Overview

Since **1997**

In custom software development

7

Development centers in Europe and Asia

700+

In-house employees
85% are software engineers

300+

Clients worldwide

Focus on specific domains:



Web & Mobile Apps



ERP & Asset Management



Blockchain



UI/UX Design



IoT & Infrastructure Management



DevOps



CRM & Customer Engagement



Cloud Computing & SaaS Development

Quality Certified

Ensured by Elinext Management System:



Certified Quality Management



Certified Information Security Management



Google Cloud Certified



AWS Certified



MS Azure Certified

Proven by dedicated external audits:

- Code Review
- Static Analysis
- Dynamic analysis
- QA and unit-tests
- Continuous Integration
- Rules and processes

Continuous competence development:

- Best-practice and knowledge sharing in onboarding process.
- Professional trainings, including external courses.
- Developer conferences and international hackathons

Our QA teams adhere to industry best practices and standards, including:



ISO 9001:2008



TMMi



ISO/IEC/IEEE 29119

Zeroing in on QA Experience

50

QA and testing
engineers

3,5 mln

Tests executed

750,000

Test cases

27

Years of
experience

Domains we serve

In addition to solid technical background, our QA engineers have profound domain understanding to help clients solve their industry-specific challenges across:

- Healthcare
- Finances
- Manufacturing
- Telecom
- Insurance
- Education
- Logistics
- eCommerce
- Media
- Sports
- Gaming
- Others

Methodologies we have mastered

- Scrum
- Kanban
- Waterfall
- Spiral
- Iterative
- V-model

Application types we test

- Web
- Mobile
- Desktop
- API

QA and Testing Tools

Technologies and programming languages



Java



Python



PHP



HTML



CSS



XML



.NET/C#



C/C++



Javascript



WSDL



XSD



RUBY



JSON



REST



SOAP



ASP.NET



C#

Databases



MS SQL



MySQL



PostgreSQL

ORACLE

Oracle

MongoDB.

MongoDB

QA and Testing Tools

Project and test management tools



Zephyr



Atlassian
Confluence



Trello



MSOffice
Project



Microsoft
TFS



TestRail



HP Quality
Center



Mantis



Bugzilla



TestLink



JIRA



Bamboo



Rally



Redmine

Automation tools



Selenium
WebDriver



HP QTP



Test
Complete



Maven



Jenkins



TeamCity



JMeter



Bamboo



SoapUI

Automation frameworks



Appium

TestNG

TestNG



jUnit



ReportNG



Robot



uiautomator

Ensuring Your Solution Works as Intended

Functional testing

+ Unit testing

+ Integration testing

+ Smoke testing

+ Sanity testing

+ System testing

+ Regression testing

+ User acceptance testing

+ API testing

+ Black\white-box testing

+ Component testing

+ UI testing

Guaranteeing Optimal Performance and User Satisfaction

Non-functional testing

+ Load testing

+ Stress testing

+ Volume testing

+ Security testing

+ Compatibility testing

+ Performance testing

+ Reliability testing

+ Scalability testing

+ Recovery testing

+ Usability testing

+ Localization testing

+ Compliance testing

+ Portability testing

QA Value at Each Stage of SDLC

1

Requirements analysis

- Assessing requirements from the quality perspective to identify potential issues
- Ensuring that requirements are clear, unambiguous, and measurable
- Defining the testing strategy, release cycles, and the scope of QA activities

2

Design

- Supporting the UX team in their understanding of the existing functionality (especially for long-term projects)
- Identifying design aspects that might cause problems

3

Development

- Reviewing functionality and preparing test environment
- Collaborating with developers to prevent incorrect implementation
- Preparing draft test cases and checklists to accelerate the testing phase

4

Testing

- Writing and executing checklists or test cases
- Tracking project changes and updating test documentation
- Preparing an execution report with detailed description of acceptance criteria, tested functionality, used platforms and environments, etc.

5

Deployment

- PDC (Post Deployment Cases) testing to ensure all key features work as expected
- User acceptance testing
- Supporting the deployment process as a knowledge keeper

6

Maintenance

- Assisting the support team in investigating client reports and incidents
- Identifying the root cause of problems

Why Elinext?



End-to-end project involvement

We have experience working in highly regulated domains like healthcare and finance with maximum engagement of our QA experts at every stage.



Unique testing skills

Our QA engineers are not only equipped with the full gamut of standard testing skills, but they also have experience with niche use cases and cutting-edge technology like applications for industrial robots.



Automated CI/CD

As early adopters of CI/CD, we utilize this approach to accelerate and improve reliability of automated tests while providing the development team with fast feedback.

Proprietary Test Management System

Drawing from our 2+ decades of QA expertise, we are developing an in-house test management system that will provide clients with all relevant test documentation and comprehensive reports.

The screenshot displays the eInext Test Management System interface. The top navigation bar includes 'eInext TESTTRACK', 'Projects', and 'Administration'. The main content area is titled 'Test run 2.1' and is divided into three main sections:

- Test cases:** A list of test cases with filters and a table of results. The table includes columns for 'Test case name', 'Status', and 'Assigned to'. The 'T05_Add numbered list...' test case is highlighted with a red 'Failed' status.
- T05_Add numbered list to inline table within an document:** A detailed view of the selected test case. It shows a 'Summary' section with a description, a 'Steps' section with two steps, and an 'Expected results' section. The 'Steps' section includes a 'Current run' and a 'Full history' table.
- Folders:** A sidebar on the right showing a hierarchical structure of folders, including '1 Conditions (0)', '1.1 Prerequisite (0)', '1.1.1 Software & Development (6)', '1.1.2 Hardware (43)', '2 Installation (2)', '3 Updates (5)', '4 Goals (7)', '5 Metrics (11)', '6 Login & Account (2)', and '7 Administration (71)'.

Test case name	Status	Assigned to
T01_Test case name1	Passed	Darel Swith
T02_Format table with...	Blocked	Jane Cooper
T03_Change document	Untested	Mia McCoy
T05_Add numbered list...	Failed	Jane Cooper
T07_Add numbered list...	Blocked	Jane Cooper
T10_Test add-in install...	Failed	Jane Cooper
T09_Verify title, subtitle...	Passed	Jane Cooper
T10_Export document	Passed	Jane Cooper
T11_Export enclosed...	Passed	Jane Cooper
T12_Add bullet points	Passed	Jane Cooper

Steps	Expected results
1. Enter username and password for Admin and then click the login button	User is logged in. Home page appears with rooms selection in the left side and welcome screen text in the right side.
2. The knowledge day algorithm	Office ipsum you must be muted. Invite game need just teams both production. Beforehand illustration synchronise lift deck run minimize cloud. The knowledge day algorithm ipsum picture. Items they feelers team buy-in that see lot.

Status	Test run name	Date
Failed	Test run 2.0	20 May 2024
Blocked	Test run 2.0	1 May 2024
Failed	Test run 2.0	1 Mar 2024
Assigned	Test run 2.0	29 Apr 2024
Untested	Test run 2.0	27 Apr 2024

Document Management System For Clinical Trials

This large-scale project is a modular software platform that allows life sciences companies to streamline the execution and commercialization of global clinical trials and collaborate on partnerships while reducing administrative burdens.

[Learn More ->](#)

Features

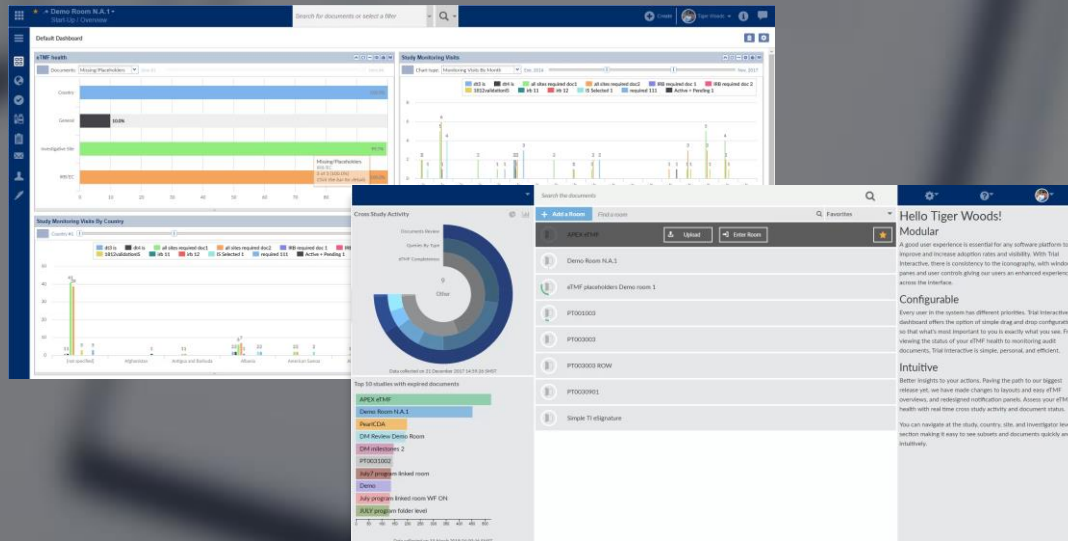
- 25000+ test cases, 7000+ automated cases
- CI/CD for QA and production instances
- Automated PDC and UAT
- Integration testing for dozens of integrated external solutions
- 18+ production instances with different versions

Technologies

- C#
- ANGULAR
- .NET
- EXTJS
- SVN
- GIT
- CAS

CLIENT

A US-based healthcare provider



Healthcare Data Anonymization Platform

The solution is a fully functional website and a remote UNIX-server. It enables healthcare organizations to quickly and easily apply a risk-based responsible de-identification methodology. It ensures individual privacy and legal compliance while process management and automatization.

[Learn More ->](#)

Features

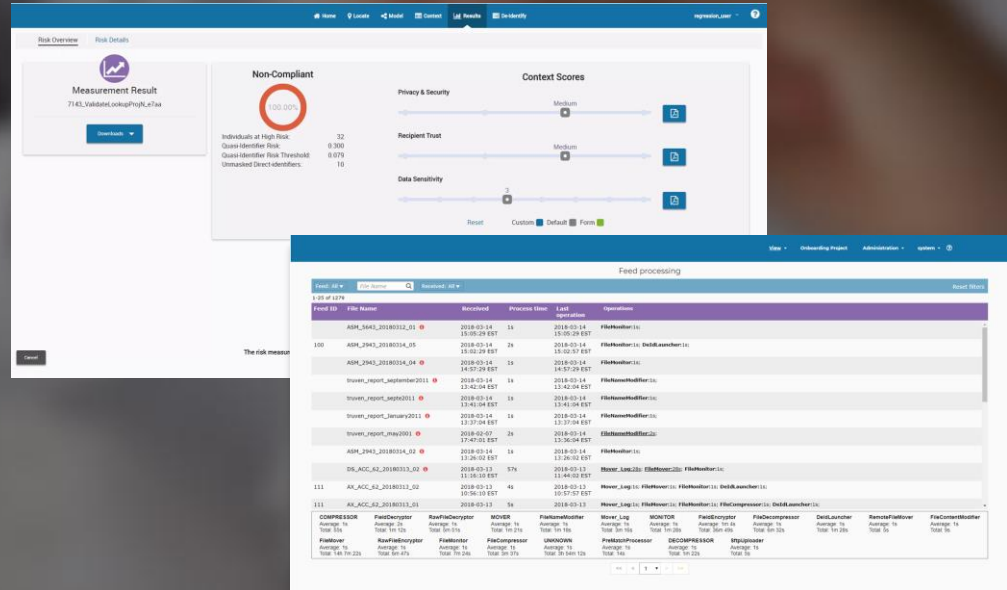
- Manual and automated QA
- UI migration
- Cross platform testing
- Visualization when controlling data processing
- UNIX processes management using GUI
- Detailed reports to customer and Data partners

Technologies

- JAVA
- SPRING
- MYSQL
- JUNIT
- HIBERNATE
- APACHE

CLIENT

A Canadian healthcare company



Global Payroll Management Software

The Elinext team is working on the MVP for a SaaS-based payroll management solution. The solution leverages two data processing systems (in Frankfurt and Beijing), mirroring each other to enable data exchange between two jurisdictions. [Learn More ->](#)

Features

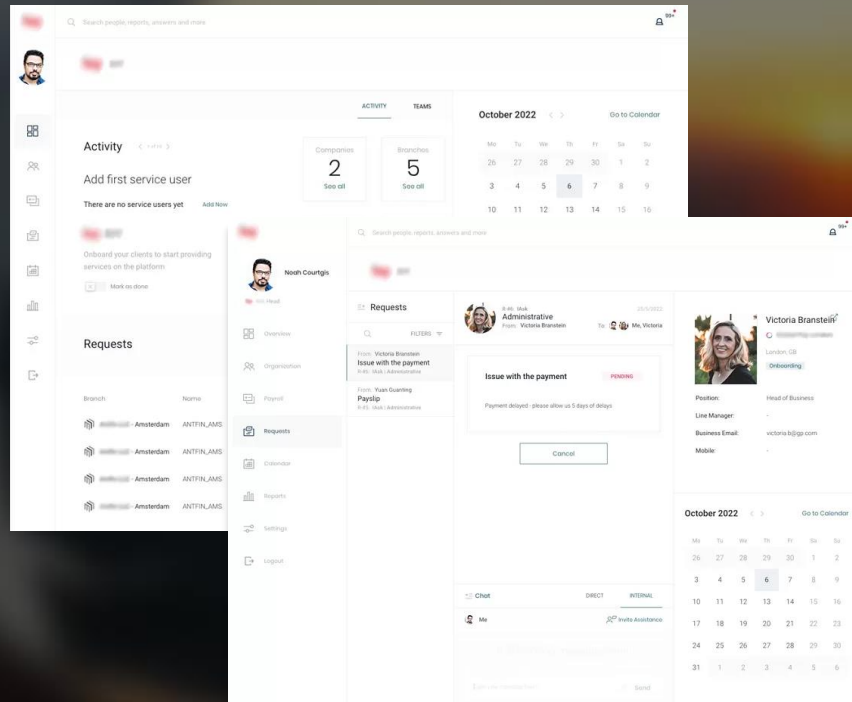
- The Overview module with key information about the account
- The Organization module for configuring the company structure.
- The Payroll module that enables payroll activation for employees
- The Calendar module with all the dates related to payroll
- Dashboards and reporting

Technologies

- NEST.JS
- REDUX
- NODE.JS
- REACT.JS
- STYLELINT
- SOCKET.IO
- POSTGRESQL
- TYPESCRIPT

CLIENT

A Chinese startup



B2B Online Payment Platform

When the client hit a major project roadblock with the previous vendor, Elinext came to the rescue. After architecture re-writing, refactoring and feature enhancement, we delivered a fully-functional online payment solution, tested from end to end by our QA experts.

[Learn More ->](#)

Features

- A customizable widget that can be integrated with a website/mobile app
- An admin portal that generates access tokens
- Supporting Mastercard, Visa, Paypal, Klarna, SEPA, etc.
- Accepting payments in 10 currencies
- Automated recurring payments
- Compliance with PCI and GDPR

Technologies

- NEST.JS
- AWS
- NODE.JS
- REACT.JS
- JAVASCRIPT
- REACT NATIVE
- DYNAMODB
- TYPESCRIPT

CLIENT

A major European car manufacturer



Financial Risk Management Software

The Elinext team delivered a complex financial risk management system consisting of two apps - one for calculating multi-currency-associated risks and the other for pinpointing the real cost of loans and assets over time.

[Learn More ->](#)

Features

- Company and entity setup
- Hedge accounting dashboard
- Hedge item and trade management
- Role-based access controls
- Regular and RTZ reports
- Period close module

Technologies

- HIBERNATE
- TOMCAT
- JAVA
- GWT/GXT
- SPRING
- MONGODB
- ANGULAR JS
- IBATIS
- POSTGRESQL
- REST WEB SERVICES

CLIENT

A business analytics company based in Silicon Valley

ESG Software For Employees

The project is an ESG solution that consists of a web app and a mobile app, and serves a channel through which employees can systematically signal to their employers how they feel about their workplace.

[Learn More ->](#)

Features

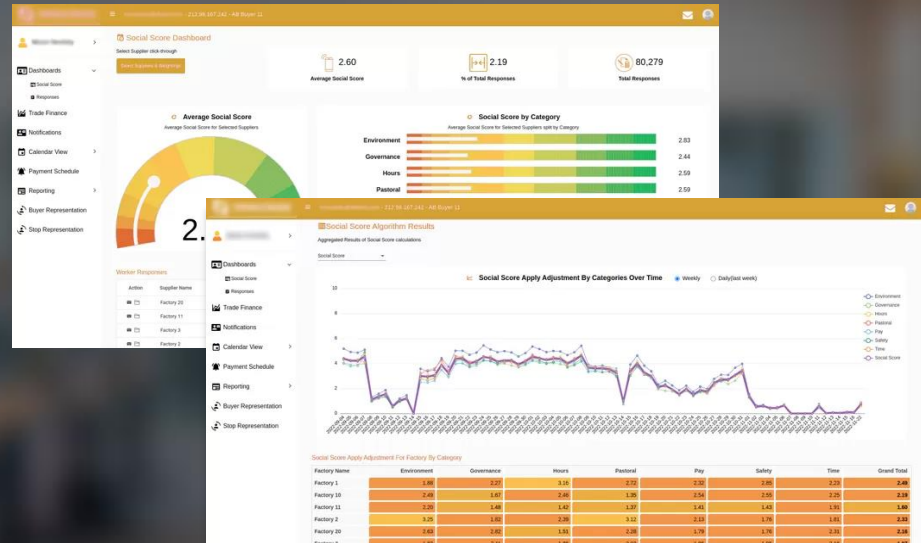
- The employee module with surveys
- The employer module with reports and configurations
- Social score dashboard that tracks various workplace aspects like the environment, governance, work hours, pay, safety and more
- Compliance reward system

Technologies

- JAVA
- SPRING
- FLEXMONSTER
- SYNCFUSION
- ANGULAR

CLIENT

A UK-based startup



Contract Management Software For Bond Trading

With 22 people on board, the Elinext team delivered a high-performing solution with complex architecture that automates contracts creation and allows multiple parties to collaborate on finalizing them.

[Learn More ->](#)

Features

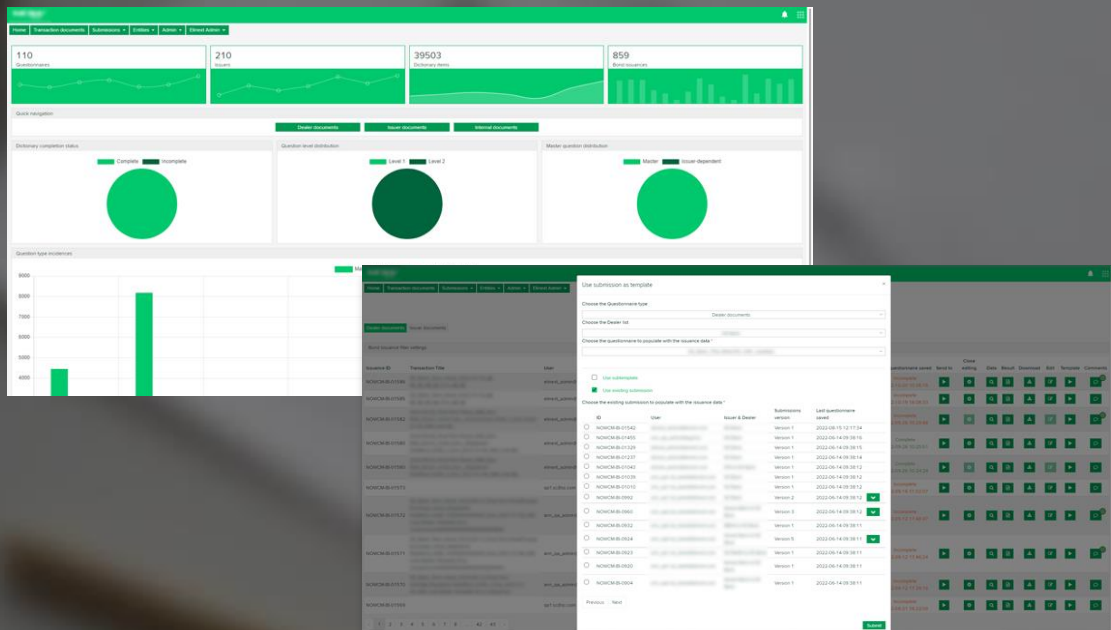
- Template module for managing templates and questionnaires
- Contracts and Documents module to convert questionnaires into documents
- Collaboration module to enable multiple users to work together
- Management module for setting up user roles and permission

Technologies

- SELENIUM
- MAILGUN
- JAVA
- C++
- JQUERY
- LARAVEL
- PHP
- REACT
- JENKINS
- MARIADB

CLIENT

A Luxembourg-based startup



Cash And Liquidity Management App

Developing a solution for managing and monitoring short-term funding requirements based on transaction history. Our senior BA worked closely with the stakeholders to translate high-level financial requirements into detailed technical specs.

[Learn More ->](#)

Features

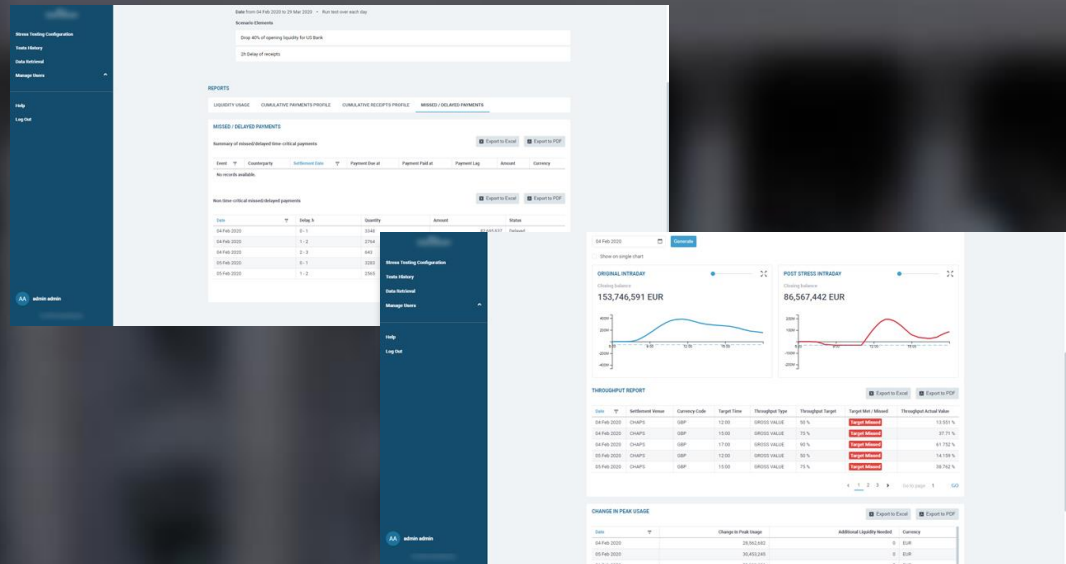
- Consolidating financial transactions from internal and external sources
- Running a comprehensive stress scenario
- Compliance with the BCBS 248 intraday liquidity management framework
- Microservices-based architecture

Technologies

- JAVA
- SPRING
- KUBERNETES
- PROMETHEUS
- ANGULAR
- MONGODB
- POSTGRESQL

CLIENT

A British fintech company



Remote Network And Router Management Platform

The project is a software platform for seamless subscriber management and end-to-end network visibility. It consists of a website, a set of analytics tools and a command-line interface. The system processes around 1,000,000 payloads from 1,000,000 routers per second.

[Learn More ->](#)

Features

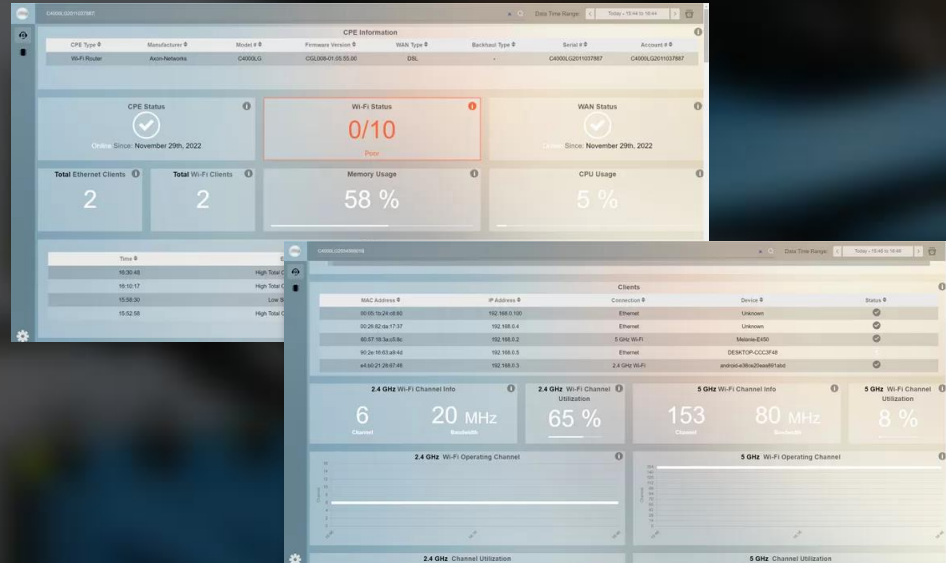
- Microservices-based architecture to support huge data throughput and scalability
- Cloud adapters for routers (CPE) and firmware
- Real-time analytics
- Compliance with telecommunication standards

Technologies

- GO
- KUBERNETES
- JAVA
- KOTLIN
- POSTGRESQL
- SPRING
- AWS S3
- REACT
- PYTHON
- MONGODB

CLIENT

A Danish-American telecommunication software provider



Mobile App for Electric Vehicles Charging Solution

The client engaged Elinext to develop a fully-featured iOS-based mobile app to simplify the charging process for the owners of green cars. The project also included a web app for telemetry.

[Learn More ->](#)

Features

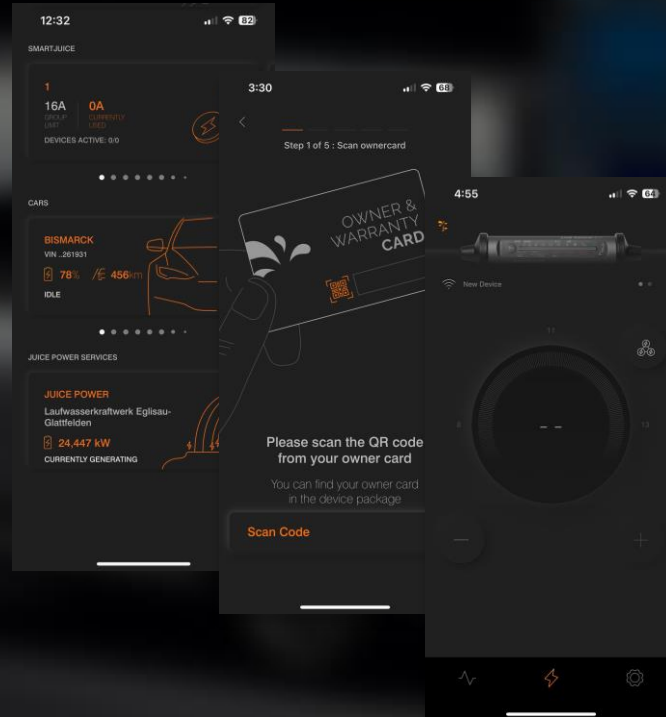
- Device management
- Controls and charge restrictions
- The device's status
- Options to choose a specific current strength
- Total energy and charging duration
- Power and voltage per phase
- Charging history

Technologies

- KOTLIN
- SWIFT
- FOUNDATION
- UIKIT
- COCOALUMBERJACK
- SNAPKIT
- RETROFIT
- TEAMCITY

CLIENT

A Switzerland-based company that specializes in creating innovative EV charging solutions



CI/CD Optimization And Automation

Working with a wide range of infrastructure solutions, the client tasked the Elinext team with developing an automated and easy-to-maintain CI/CD pipeline. The resulting solution has led to reducing the development by 40%.

[Learn More ->](#)

Features

- CI/CD pipeline customization according to project needs
- Fast and easy components configuration
- The ability to skip certain build stages

Technologies

- JENKINS
- GROOVY

CLIENT

A global technology company that delivers infrastructure management solutions

Elinext CV Manager

An internal applicant tracking system that brings visibility into the recruitment pipeline, facilitates efficient management of candidates and vacancies, and accelerates the hiring process.

[Learn More ->](#)

Features

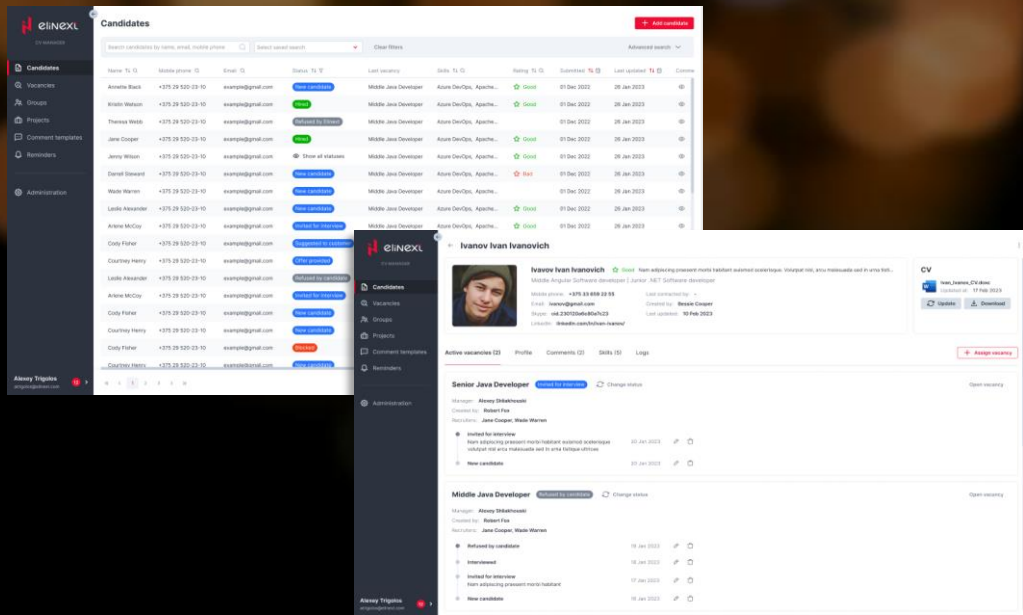
- Candidate management including resume upload and download, comments and status tracking
- Vacancy management including candidates assessment and advanced search.
- Comprehensive user management
- In-app reminders and email notifications

Technologies

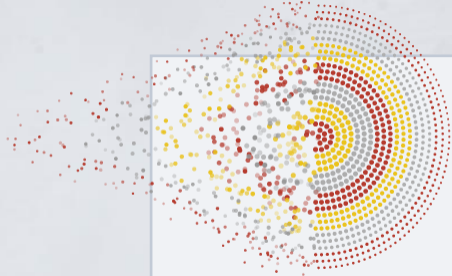
- C#
- ANGULAR
- TYPESCRIPT
- ASP.NET
- MSSQL

CLIENT

An in-house solution



Solutions We Deliver

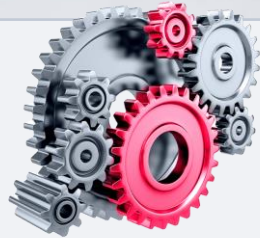


**Data Management
& Big Data**



**Business Intelligence
/ Analytics**

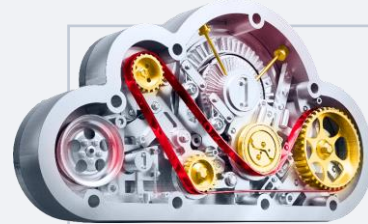
**Artificial
Intelligence,
Machine
Learning,
Robotic
Process
Automation**



Quality Assurance



Internet of Things



Cloud-Solutions

Cooperation Models

Fixed Cost

- To freeze project costs having a very detailed scope of work and schedule
- To avoid investing too much time in budget control and project tracking
- To develop an MVP or a small-scale product under \$50,000 USD
- To have a high level of predictability

Time and Materials

- To be agile and adapt quickly your product to the market demand and internal needs
- To control the project costs and progress but it is difficult to define upfront scope, schedule and scope outlines
- To decrease costs by saving money calculated by the IT vendor for possible project risks

Dedicated Team

- To extend your team's capacity
- To add specific knowledge or skills to your team
- To speed up your development process quickly
- To rely on the vendor's dev team as if it was sitting in our office



Quality Delivered by the Team (Agile Model)

Discovery and Design phase

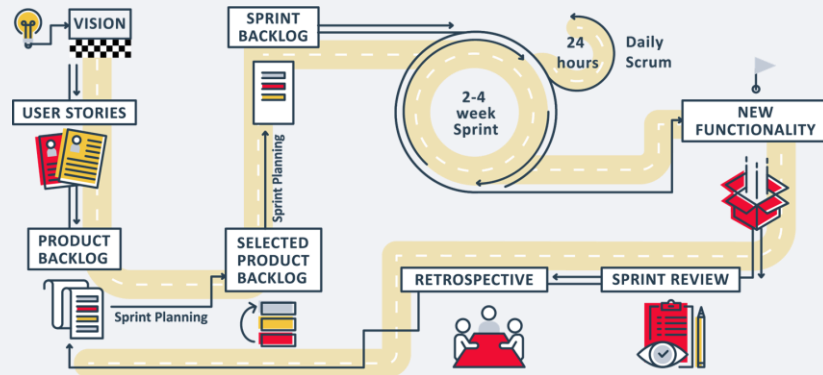
- Team setup
- Plan and prepare
- Refine requirements (Functional and Non-Functional)
- Design
- Architecture
- Infrastructure
- Product backlog

Development – 1 sprint (1-2 weeks) – recurring till the final delivery

- Sprint backlog and planning
- Feature(s)
- “Ready for Release”
- Sprint backlog and planning
- Feature(s)
- “Ready for Release”

Initial Analysis of requirements, planning, UI/UX Design (1-4 sprints):

- Proof features and their priority by value and complexity
- Design a truly flexible and future-proof solution
- Plan an effective communication model
- Ensure further possibility to develop several services/ features in parallel





Let's set up a powerful collaboration!



elinext.com



info@elinext.com



elinext.group

Our Offices



USA



Ireland



France

Germany

Poland

Belarus

Ukraine

Georgia

Kazakhstan

Uzbekistan

Vietnam

Singapore

Hong Kong

Development Centers

Poland

Sabały 58/lokal A1-B1 st.,
02-174 Warszawa
+48 22 104 20 98

Vietnam

37A Phan Xich Long st., Ward 3,
Phu Nhuan District, Ho Chi Minh
City. +84 8 3995 6849

Ukraine

Dniprovska naberezhna
26Zh, office 25, Kyiv
+380 94 711 2247

Belarus

155B Bogdanovich st.,
Minsk, 220040
+375 17 237 5365

Georgia

8 Vakhtang Gorgasali
st., Tbilisi, 0105
+995 706 001 005

Kazakhstan

12 Dinmukhamed
Qonayev st., Office C-12,
Astana, 020000

Uzbekistan

2 Amir Temur st., Office 8,
Tashkent City, 100105

International Offices

USA

6800 Jericho Turnpike, Suite
120W, Syosset, New York, 11791
+1 516 447 0268

Germany

Europaplatz 2,
10557, Berlin
+49 800 0010461

Ireland

Marina House, Adelphi Quay,
Waterford
+353 51 347 055

France

Republique Business Center,
3/3 bis rue Taylor, 75010 Paris
+33 1 85 64 10 29

Hong Kong

Office 302, Dominion
Centre, 43-59 Queen's
Road East, Wanchai

Singapore

100 Tras st., #16-01,
100 AM, Singapore,
079027