



Company Profile

Manufacturing



Elinext Company Overview

Since **1997**

In custom software development

7

Development centers in Europe and Asia

700+

In-house employees
85% are software engineers

300+

Clients worldwide

Focus on specific domains:



Web & Mobile Apps



ERP & Asset Management



Blockchain



UI/UX Design



IoT & Infrastructure Management



DevOps



CRM & Customer Engagement



Cloud Computing & SaaS Development

Technologies

Backend



Java



Python



Node.js



.NET/C#



C/C++



Solidity



PHP

Frontend



React.js



Javascript



Angular



Typescript



Vue.js

Mobile



Kotlin



Swift



Flutter



React
Native

Cloud



AWS



Azure



GCP



Digital
Ocean

Quality Certified

Ensured by Elinext Management System:



Certified Quality
Management



Certified Information
Security Management



Google Cloud
Certified



AWS
Certified



MS Azure
Certified

Proven by dedicated
external audits:

- Code Review
- Static Analysis
- Dynamic analysis
- QA and unit-tests
- Continuous Integration
- Rules and processes

Continuous competence
development:

- Best-practice and knowledge sharing in onboarding process.
- Professional trainings, including external courses.
- Developer conferences and international hackathons

We develop medical solutions strictly in line with
product/process quality and security standards, including:



ISO 9001



ISO 27001



IEC 61508



IEC 62443



ANSI/ISA-95



IATF 16949



IAQG 9100 – IRIS



FDA 21 CFR Part



GMP/GLP

Manufacturing Clients



A German company specializes in manufacturing chainsaws and other handheld power equipment, such as trimmers and blowers. Today, STIHL products are available in over 160 countries, facilitating tasks in professional forestry, agriculture, landscape, construction, and for meticulous homeowners worldwide.

Ongoing Cooperation
for 3 Years

A Team Leader, 2 Mid-Level Developers, Quality Assurance Engineer

Time And Materials



Automation Intellect offers advanced manufacturing analytics to optimize production and improve equipment effectiveness. Using IoT, cloud computing, and AI, they enable data-driven decision-making and operational efficiency for various industries.

Ongoing Cooperation

Front-End and Back-End Developers, System Architects, And Testers

Time And Materials

TRUMPF



TRUMPF is a global leader in industrial machine tools and laser technology, offering innovative solutions for sheet metal processing and various industrial applications.

Several Months

One Mobile Developer

Fixed Cost

SIEMENS



Siemens AG is a multinational technology conglomerate. Its operations encompass automation and digitalization in the process and manufacturing industries, intelligent infrastructure for buildings, etc.

Ongoing Cooperation
Since 2005

Five Teams Consisting
Of 6-7 Specialists Each

Time And Materials

Manufacturing Expertise

 Manufacturing Execution Systems	+ Work order management	+ Production scheduling	+ Resource allocation and tracking
	+ Machine performance analytics and reporting	+ Real-time data collection from equipment, sensors, and operators	
 MRP and ERP Solutions	+ Custom MRP and ERP systems development	+ Ready-made MRP and ERP solutions customization and integration	+ Capacity planning
	+ Supplier and inventory management	+ Raw materials and consumables tracking	
 Workforce Management Solutions	+ Centralized schedule management	+ Time and attendance tracking	+ Leave management
	+ Performance metrics and KPIs analysis	+ Integration with HR and payroll systems	

Manufacturing Expertise

Industry 4.0 Solutions

+ Digital Twin applications

+ Industrial Internet of Things (IIoT) solutions

+ Real-time asset tracking

+ Computer vision-driven quality control

+ AI-powered analysis of facility's efficiency, production cycles, and more

+ Web, iOS, and Android support

Predictive Maintenance Systems

+ Real-time equipment status monitoring

+ ML-powered failure or maintenance needs prediction

+ Remaining Useful Life (RUL) prediction

+ AI-driven recommendations on performance optimization

Human Machine Interfaces

+ Integration with control systems (PLC, SCADA, DCS)

+ Touch and gesture control

+ Role-based access control

+ Data viewing restrictions

+ Real-time data visualization (graphs, charts, animations, notifications, etc.)

Manufacturing Expertise

Environmental, Health and Safety Systems

+ Incidents and accidents tracking

+ Audits and inspections planning

+ Training and competency management

+ Compliance requirements management

+ Correction and prevention actions (CAPA) management

Product Lifecycle Management

+ Real-time collaboration tools

+ Lifecycle planning and quality control

+ Service and maintenance management

+ Engineering changes management

+ Product data management including CAD models, BOMs, specifications, etc.

Supply chain Management

+ Demand forecasting and planning

+ Supplier analytics based on historic and real-time data

+ Procurement KPIs monitoring

+ Order fulfillment and execution

+ Real-time inventory data analysis

+ Warehouse management

Manufacturing Execution System (MES)

Five Elinext teams are working on the project, improving the legacy MES model, introducing new features, and helping integrate the system into end customers' environments. Currently, the system's ROI reaches up to 400%.

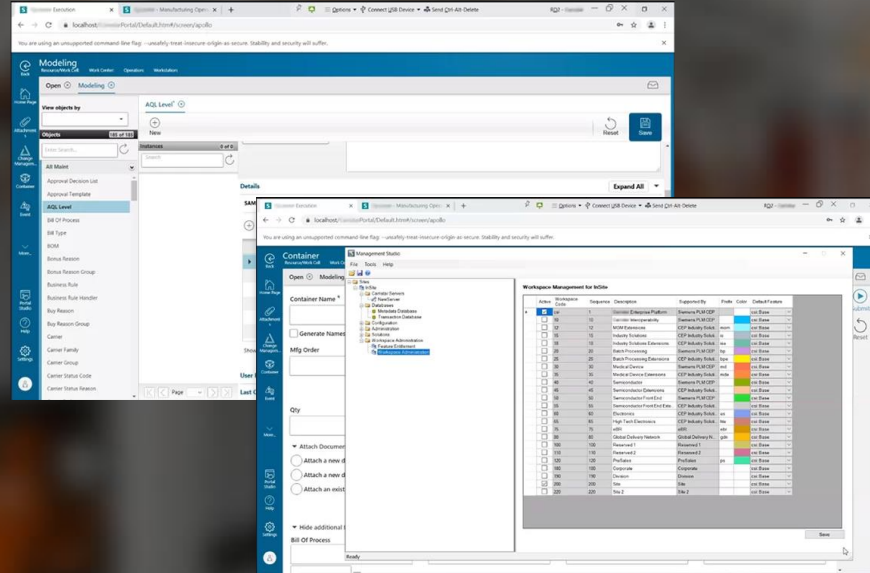
[Learn More ->](#)

Features

- Collecting and storing data
- Launching and pausing production
- Managing documentation
- Managing human resources
- Monitoring the manufacturing process
- Managing materials, equipment, and operations
- Quality control

Technologies

- C#
- PL/SQL
- TRANSACT SQL
- C++
- ANGULAR
- JQUERY
- JAVASCRIPT
- .NET
- ORACLE
- MS SQL



Software For Roofing And Solar Paneling Contractors

The Elinext team stepped up to help the client develop a solution that enables solar panel contractors to calculate a project's cost, request materials, quote clients, manage sales, etc. The solution complies with data security and regional architectural requirements..

[Learn More ->](#)

Features

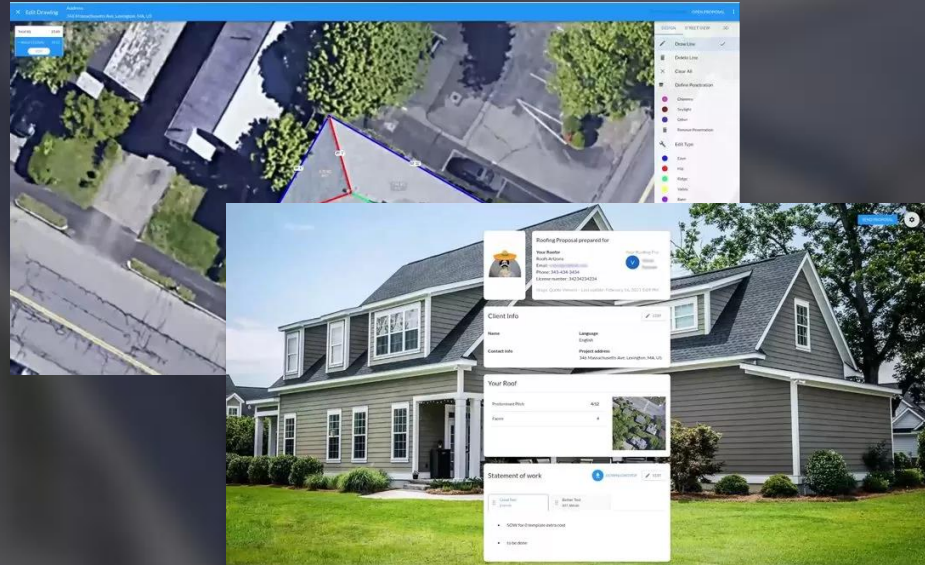
- Size measurement and automated materials estimation
- Catalogs of materials and solar panels
- Site assessment
- Interactive quote creation
- Customer relations management
- Admin panel

Technologies

- NODE.JS
- REACT.JS
- EXPRESS.JS
- MS SQL
- AWS EC2
- TYPESCRIPT
- DOCKER

CLIENT

A provider of software-as-a-service for roofing and solar paneling companies and professionals



A Comprehensive Sales Analytics Platform

To help the client implement a targeted approach to dealer partnerships, the Elinext team delivered three applications: a dealer management app, a CRM system, and an app for market research.

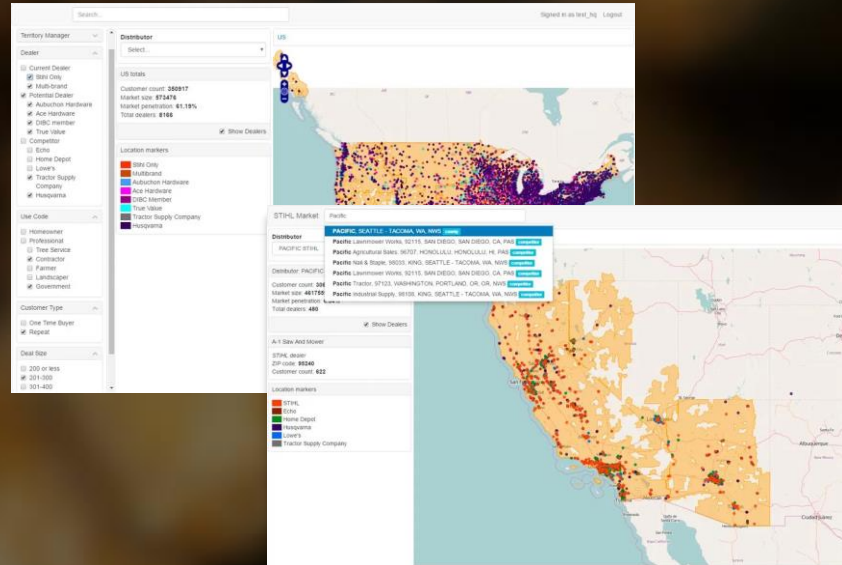
[Learn More ->](#)

Features

- Tracking dealers' performance
- Monitoring the product mix, customer diversity, etc.
- Lists of orders with details of each deal
- Customer profiles, purchase history, field notes
- A multi-layered system of permissions and roles

Technologies

- JAVA
- SPRING BOOT
- ANGULAR
- FRONT-END



Real-Time Data Insights Of Machines Performance

The project is a robust platform that obtains vital operational data directly from a factory machine and offers actionable insights to improve the Overall Equipment Effectiveness.

[Learn More ->](#)

Features

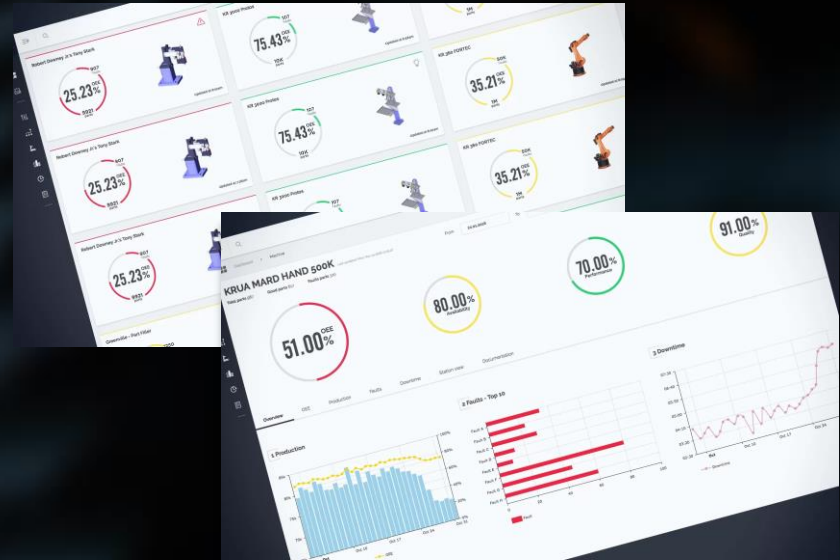
- Collecting data from edge devices
- Analyzing raw machine data
- Role-based access control and data access control
- Interactive machine data visualization
- Real-time data update support based on SignalR

Technologies

- C/C++
- ANGULAR
- .NET
- ASP.NET
- S3
- PYTHON
- SIGNALR
- MYSQL
- DYNAMODB
- DEVOPS

CLIENT

A US-based manufacturing company

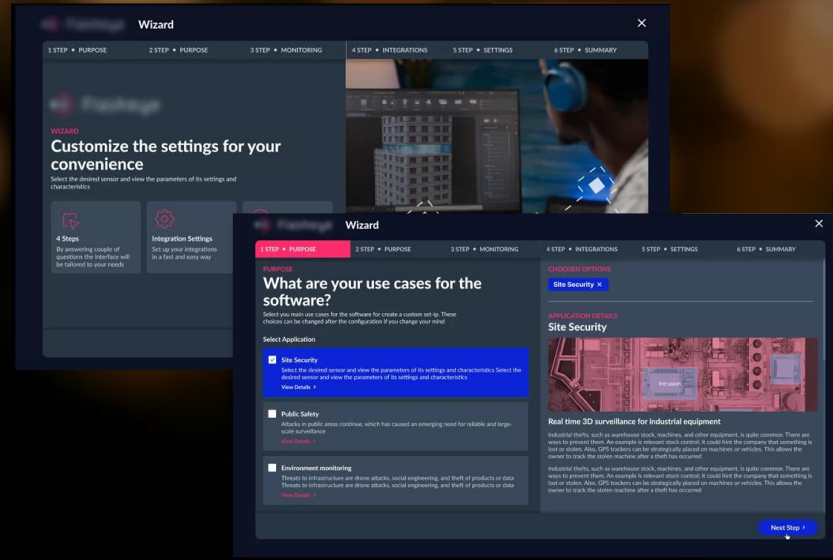


[Learn More ->](#)

- Integrating the Wizard with the user's system (a CCTV circuit, a data server, etc.)
- Calibrating sensors in the Configurator
- Organizing sensors into groups for easy monitoring
- Custom localization with specific fonts and text files

- JAVA
- ANGULAR

A Swedish company specializing in installing and maintaining light detection and ranging devices



Punch Force Calculator For TRUMPF Machines

The Elinext team was tasked to create an easy-to-use application to simplify punching calculations like punching force, cutting clearance, pre-punching diameter, maximum edge length, stripper selection, sheet weight, etc.

[Learn More ->](#)

Features

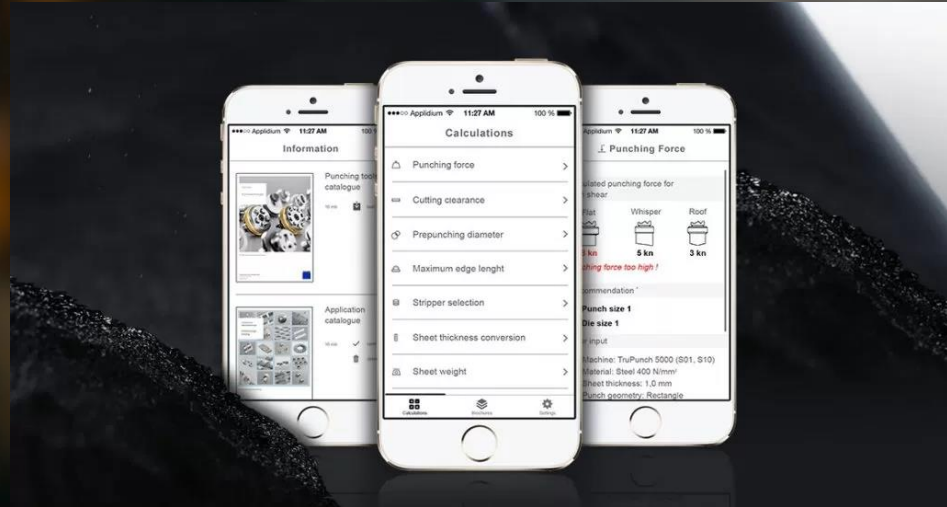
- Switching from metric to imperial units
- Supporting multiple languages
- Downloading brochures for offline reading
- Available on iPhone, Android, and web

Technologies

- ANGULAR JS
- HTML
- APACHE CORDOVA

CLIENT

An industrial machine manufacturing company



SENTRON Knowledge Interface: QR And Barcode Scanner App

The client engaged Elinext to develop an iPhone/iPad app to scan QR and linear barcodes on products and get up-to-date technical information. For that, our developers combined two free APIs into one that has no analogs.

[Learn More ->](#)

Features

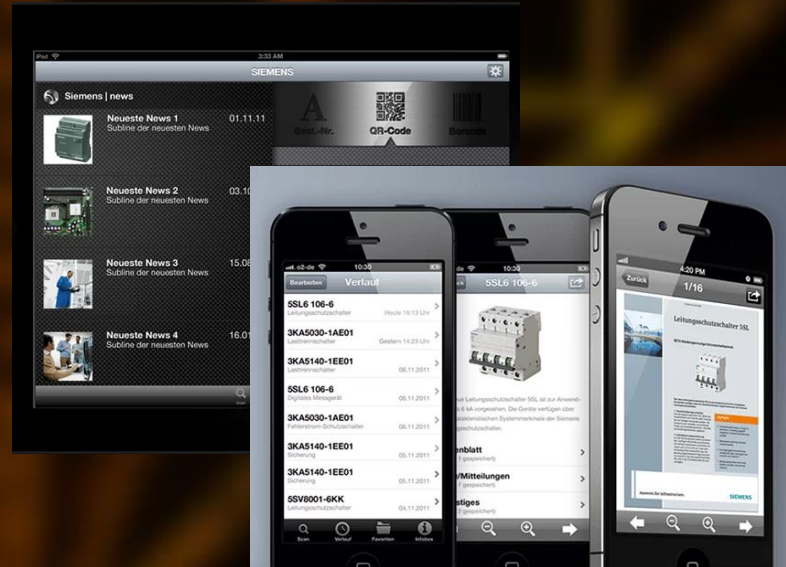
- Barcode recognition
- The ability to choose the type of scanner
- Asynchronous file downloading
- PDF and HTML viewing
- Storing files in a database
- Displaying projects and devices marked as favorite

Technologies

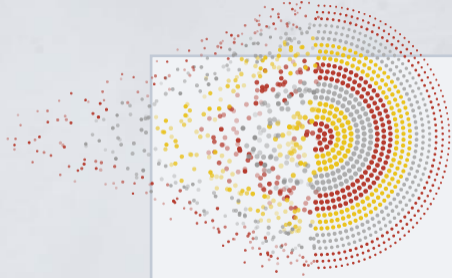
- COREDATA
- C/OBJECTIVE-C
- UIKIT
- QUARTZCORE
- MAPKIT
- COREVIDEO

CLIENT

A global provider of tech solutions



Solutions We Deliver

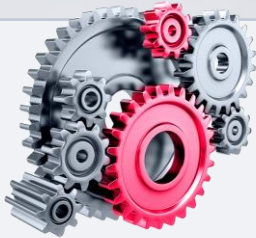


**Data Management
& Big Data**



**Business Intelligence
/ Analytics**

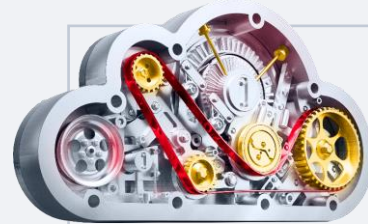
**Artificial
Intelligence,
Machine
Learning,
Robotic
Process
Automation**



Quality Assurance



Internet of Things



Cloud-Solutions

Cooperation Models

Fixed Cost

- To freeze project costs having a very detailed scope of work and schedule
- To avoid investing too much time in budget control and project tracking
- To develop an MVP or a small-scale product under \$50,000 USD
- To have a high level of predictability

Time and Materials

- To be agile and adapt quickly your product to the market demand and internal needs
- To control the project costs and progress but it is difficult to define upfront scope, schedule and scope outlines
- To decrease costs by saving money calculated by the IT vendor for possible project risks

Dedicated Team

- To extend your team's capacity
- To add specific knowledge or skills to your team
- To speed up your development process quickly
- To rely on the vendor's dev team as if it was sitting in our office



Quality Delivered by the Team (Agile Model)

Discovery and Design phase

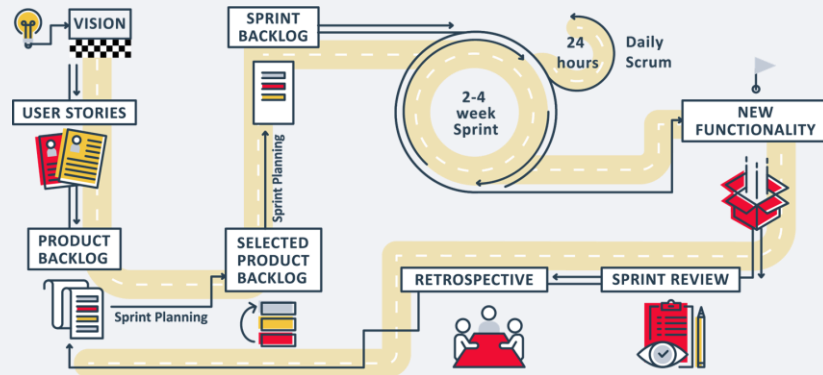
- Team setup
- Plan and prepare
- Refine requirements (Functional and Non-Functional)
- Design
- Architecture
- Infrastructure
- Product backlog

Development – 1 sprint (1-2 weeks) – recurring till the final delivery

- Sprint backlog and planning
- Feature(s)
- “Ready for Release”
- Sprint backlog and planning
- Feature(s)
- “Ready for Release”

Initial Analysis of requirements, planning, UI/UX Design (1-4 sprints):

- Proof features and their priority by value and complexity
- Design a truly flexible and future-proof solution
- Plan an effective communication model
- Ensure further possibility to develop several services/ features in parallel





Let's set up a powerful collaboration!



elinext.com



info@elinext.com



elinext.group

Our Offices



USA



Ireland



France

Germany

Poland

Belarus

Ukraine

Georgia

Kazakhstan

Uzbekistan

Hong Kong

Vietnam



Singapore

Development Centers

Poland

Sabały 58/lokal A1-B1 st.,
02-174 Warszawa
+48 22 104 20 98

Vietnam

37A Phan Xich Long st., Ward 3,
Phu Nhuan District, Ho Chi Minh
City. +84 8 3995 6849

Ukraine

Dniprovska naberezhna
26Zh, office 25, Kyiv
+380 94 711 2247

Belarus

155B Bogdanovich st.,
Minsk, 220040
+375 17 237 5365

Georgia

8 Vakhtang Gorgasali
st., Tbilisi, 0105
+995 706 001 005

Kazakhstan

12 Dinmukhamed
Qonayev st., Office C-12,
Astana, 020000

Uzbekistan

2 Amir Temur st., Office 8,
Tashkent City, 100105

International Offices

USA

6800 Jericho Turnpike, Suite
120W, Syosset, New York, 11791
+1 516 447 0268

Germany

Europaplatz 2,
10557, Berlin
+49 800 0010461

Ireland

Marina House, Adelphi Quay,
Waterford
+353 51 347 055

France

Republique Business Center,
3/3 bis rue Taylor, 75010 Paris
+33 1 85 64 10 29

Hong Kong

Office 302, Dominion
Centre, 43-59 Queen's
Road East, Wanchai

Singapore

100 Tras st., #16-01,
100 AM, Singapore,
079027